



# SYMON SMITH

RESIDENTIAL & COMMERCIAL ESTATE AGENTS  
AND PROPERTY MANAGEMENT

240 Stamford Hill, London, N16 6TT

Sales: 020 8802 0025

sales@symonsmith.co.uk

Management: 020 8802 0022

management@symonsmith.co.uk



## Flat 66 Milton Garden Estate, London, N16 8TS

**£2,800 Per Month**

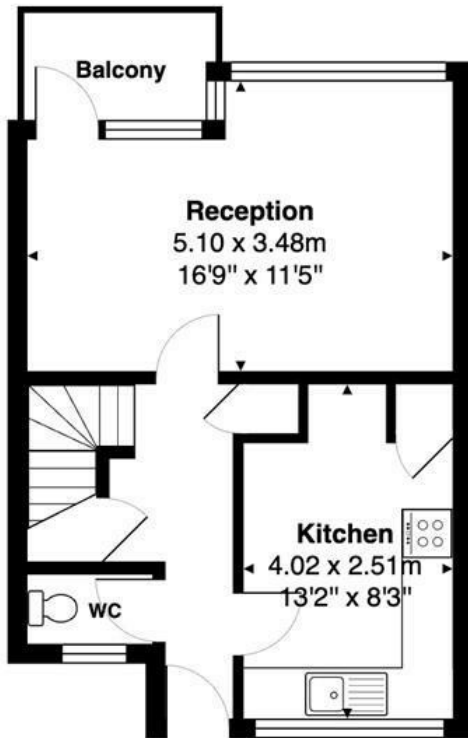
This fantastic THREE double bedroom property in the heart of Newington Green. The 880sq ft property is arranged over two floors benefits from a large lounge, balcony, separate kitchen, bathroom/wc. there is also an additional wc.

The Property has recently been refurbished to a very good standard.

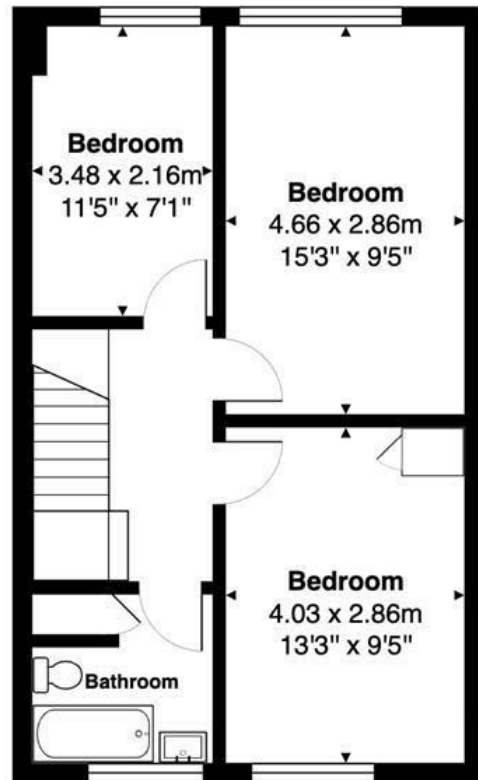
Chaucer Court is within a very short distance to the local amenities of Newington Green, plus the popular Jolene, Pernila and other bars, bakeries and coffee shops. Kingsland Road is also within a short distance making this very well located, close by are Dalston Kingsland Station and Canonbury Station perfect for commuting.

- Three Double Bedrooms
- Bathroom/wc
- EPC Rating - D
- Spacious Lounge with Balcony
- Additional WC
- Council Tax Band - C
- Fitted Kitchen
- Well Presented

Chaucer Court, Milton Gardens Estate, London, N16 8TS



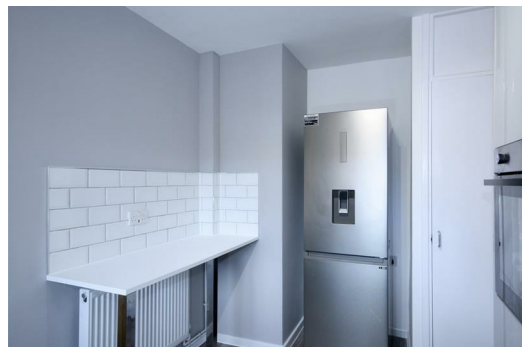
Second Floor



Third Floor

**Total Area: 81.8 m<sup>2</sup> ... 881 ft<sup>2</sup> (excluding balcony)**

All measurements are approximate and for display purposes only.



[WWW.SYMONSMITH.CO.UK](http://WWW.SYMONSMITH.CO.UK)

Symon Smith Ltd, registered in England 110 Lancaster Road, New Barnet, Herts EN4 8AL No. 3600107 VAT No. 247 764 331